

Colliers

355,110 SF Freestanding building with rail access and fenced truck yard on 14.61 acres

I-70 VPD: 241,000 VPD (2023 CDOT)

For Lease

11275 East 40th Avenue  
Denver, CO 80239

Lease Rate:  
**\$5.50/SF NNN**  
Operating Exp.:  
**\$1.47/SF**

**Contact Us:**

**T. J. Smith, SIOR**  
303 745 5800 | Main  
303 283 4576 | Dir  
tj.smith@colliers.com

**Cody Sheesley**  
303 745 5800 | Main  
303 309 3520 | Dir  
cody.sheesley@colliers.com

**Tyler Ryon, SIOR**  
303 745 5800 | Main  
720 833 4612 | Dir  
tyler.ryon@colliers.com



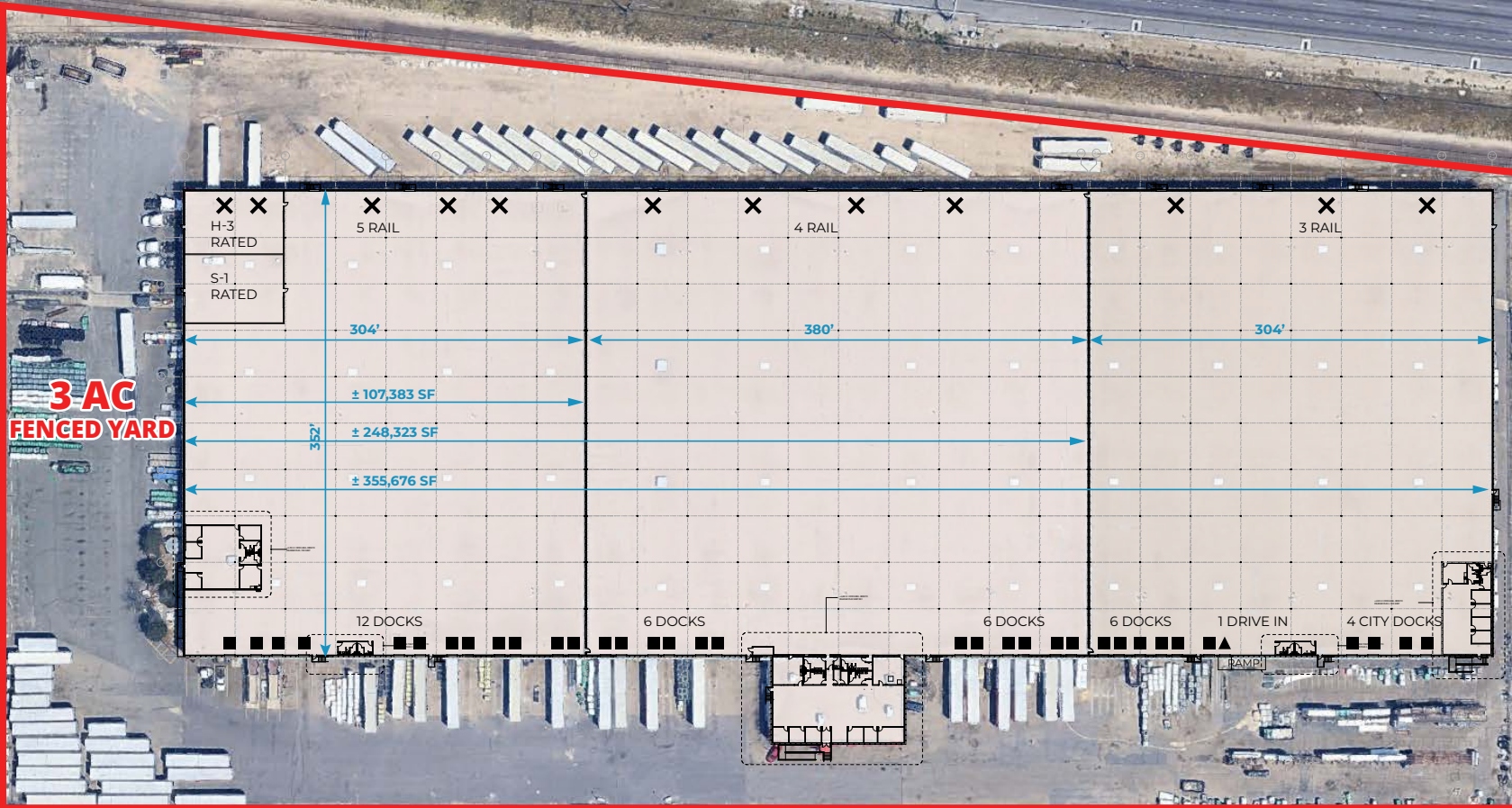
**11275 E. 40th Ave. | Denver, CO 80239**  
*355,110 SF Freestanding Building*



Available SF	355,110 SF
Divisible To	+/-107,383 SF
Office SF	+/-6,749 SF
Ceiling Heights	22'
Loading	34 Dock High Doors 12 Rail Doors 1 Drive-In Door
Outside Storage	±3 Acres Fenced (Back & West)
Rail	Union Pacific
Zoning	I-B; UO2 (DENVER)
Sprinkler	ELO System
Lighting	Motion Sensor LED
Total Site Size	14.61 Acres
Trailer Stalls	TBD
Power	1,200 Amp (TBV)
YOC	1969
Lease Rate	\$5.50/SF NNN
Operating Exp.	\$1.47/SF

# Site Plan

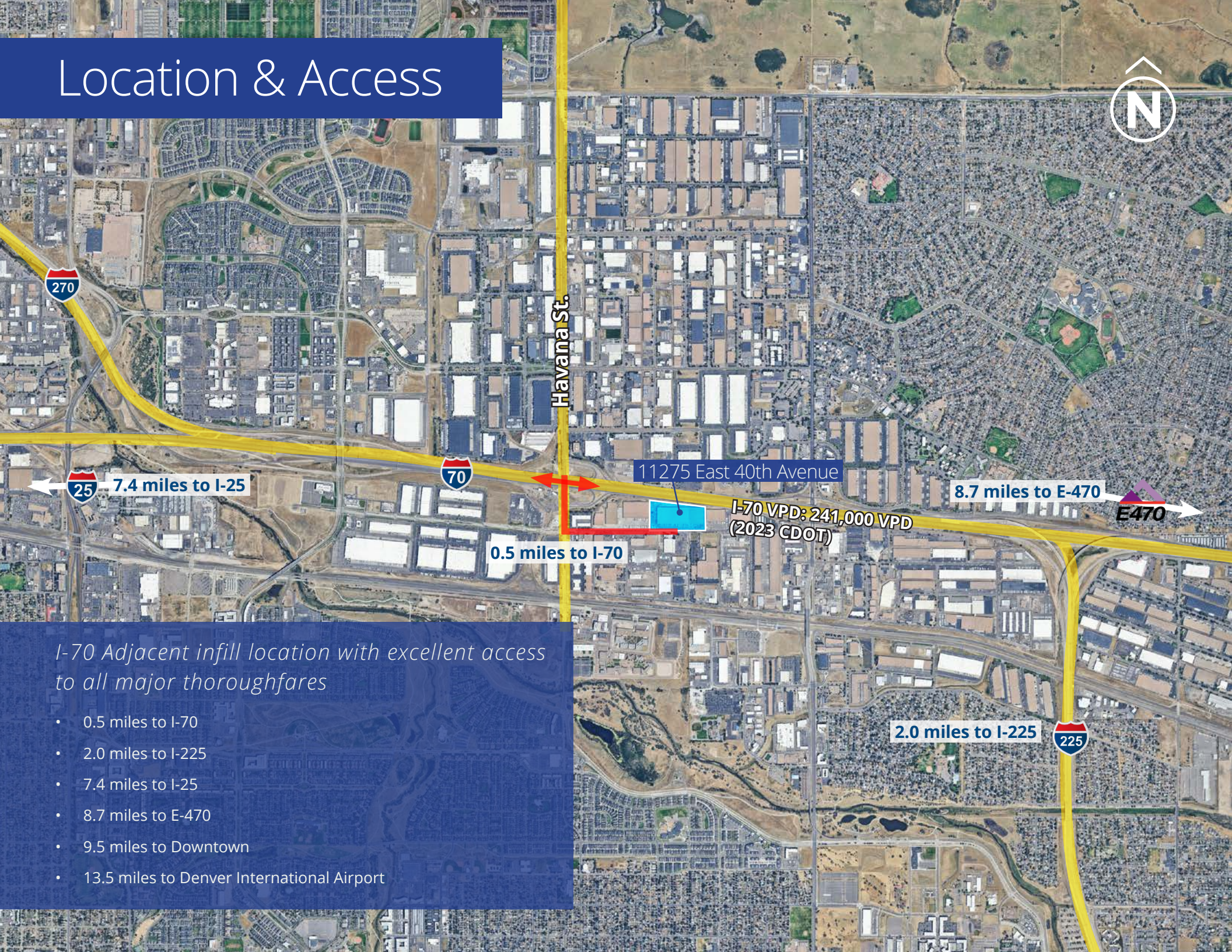
I-70 VPD: 241,000 VPD (2023 CDOT)



## Highlights

- Access to entire Metro Denver population in 45 minute drive time, 68% in 30 minute drive time
- 1,000 ft of I-70 frontage providing visibility to over 240,000 VPD (2023 CDOT)
- Fully fenced and secure site
- Dedicated trailer parking
- Heavy industrial zoning permissive of outdoor storage
- 3,543 SF flammable liquid storage room (H-3 occupancy)
- 3,865 SF aerosol storage room (S-1 occupancy)

# Location & Access



Havana St.

11275 East 40th Avenue

I-70 VPD: 241,000 VPD  
(2023 CDOT)

7.4 miles to I-25

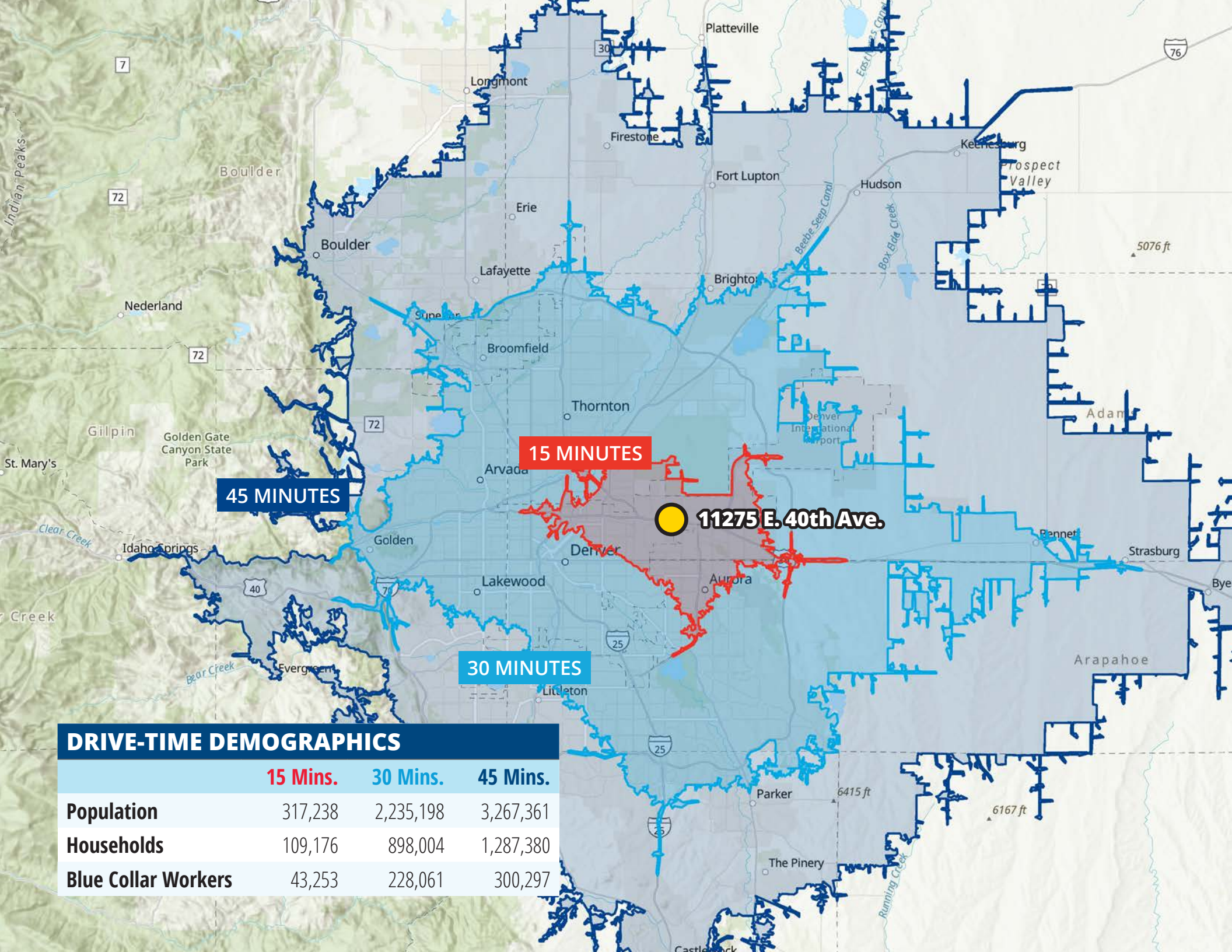
8.7 miles to E-470

0.5 miles to I-70

2.0 miles to I-225

*I-70 Adjacent infill location with excellent access to all major thoroughfares*

- 0.5 miles to I-70
- 2.0 miles to I-225
- 7.4 miles to I-25
- 8.7 miles to E-470
- 9.5 miles to Downtown
- 13.5 miles to Denver International Airport



15 MINUTES

45 MINUTES

30 MINUTES

11275 E. 40th Ave.

DRIVE-TIME DEMOGRAPHICS			
	15 Mins.	30 Mins.	45 Mins.
Population	317,238	2,235,198	3,267,361
Households	109,176	898,004	1,287,380
Blue Collar Workers	43,253	228,061	300,297



**241,000 VPD  
(2023 CDOT)**



## Contact Us:

**T. J. Smith, SIOR**  
303 745 5800 | Main  
303 283 4576 | Dir  
[tj.smith@colliers.com](mailto:tj.smith@colliers.com)

**Cody Sheesley**  
303 745 5800 | Main  
303 309 3520 | Dir  
[cody.sheesley@colliers.com](mailto:cody.sheesley@colliers.com)

**Tyler Ryon, SIOR**  
303 745 5800 | Main  
720 833 4612 | Dir  
[tyler.ryon@colliers.com](mailto:tyler.ryon@colliers.com)

This communication has been prepared by Colliers Denver for advertising and/or general information only. Colliers Denver makes no guarantees, representations or warranties of any kind, expressed or implied, regarding the information including, but not limited to, warranties of content, accuracy and reliability. Any interested party should undertake their own inquiries as to the accuracy of the information. Colliers Denver excludes unequivocally all inferred or implied terms, conditions and warranties arising out of this document and excludes all liability for loss and damages arising therefrom. This publication is the copyrighted property of Colliers Denver and/or its licensor(s). © 2025. All rights reserved. This communication is not intended to cause or induce breach of an existing listing agreement.